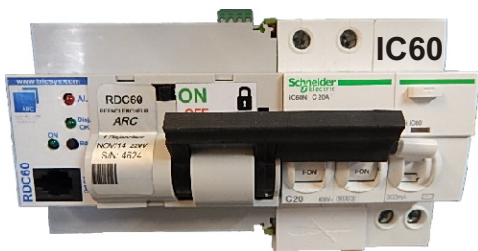


# Recloser/motor RDC60 and RDIC60

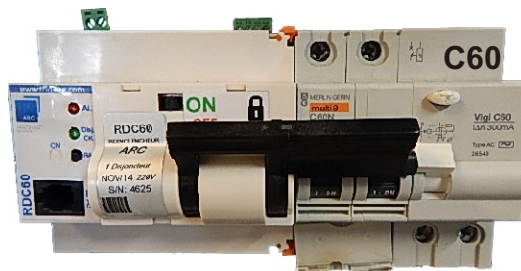
## For modular Circuit Breakers SCHNEIDER Bipolar

### Installation Notice

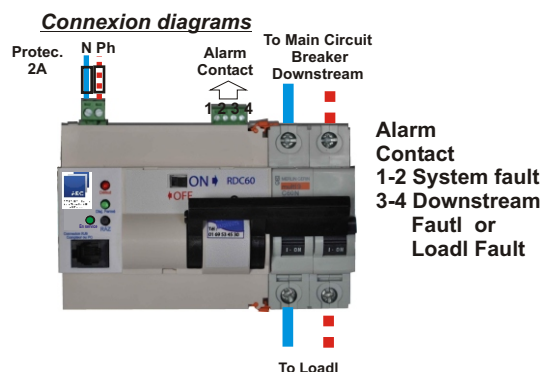
### RDIC60



### RDC60



### Presentation - Connexion Diagrams



### Operation

**Power Failure** : The Circuit breaker is closed, the Leds turn OFF the RDC !

**Permanent Fault** : (Standard version) after reclosure, if the circuit breaker opens again immediately, the RDC crashes, the red Led will be lit !

**Transient fault** : (Standard version) after 5 consecutive tests, the recloser crashes, the red led "flashes"

The number of times reclosing allowed for a transient fault can be programmed from 1 to 10.  
For permanente Fault can be programmed from 1 to 10, ARC recommends just 3 maximum

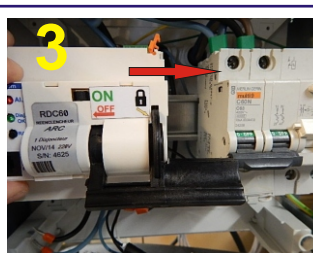
### Mechanical assembly (assembly with C60)



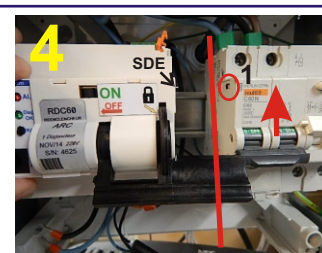
1  
Clear the left side of the C60  
Provide minimum 9cm



2  
A = Check that the label is removed C60



3  
Slide the RDC to C60  
integrating C60 mechanical

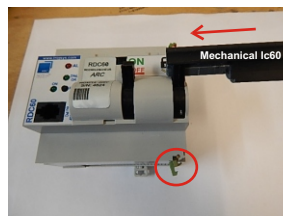


4  
Do not fully push the RDC  
be stopped when you are about 1 cm  
Closed the circuit breaker  
so that the SDE contact the RDC  
is part of the circuit breaker (1)



5  
Clipped at the top and bottom

Same for the iC60  
we must change mechanical  
and replace the orange clips by  
green clips...

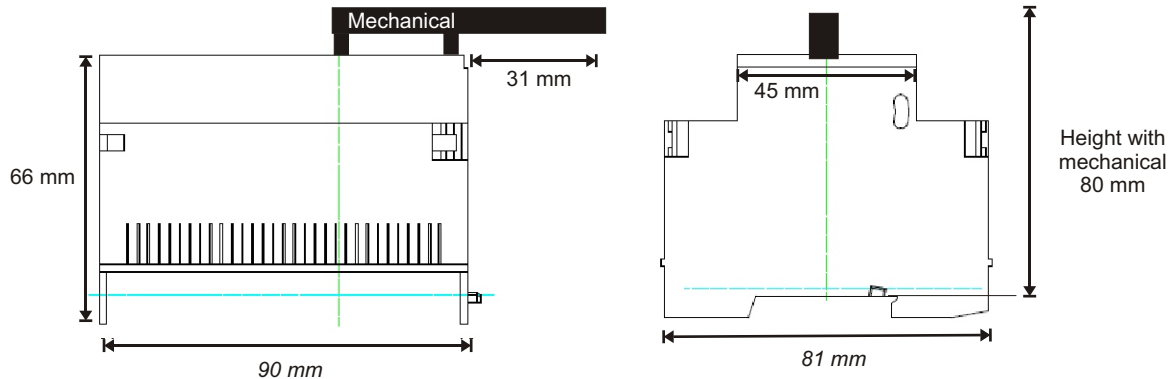


# Recloser/motor RDC60 and RDIC60

## For modular Circuit Breakers SCHNEIDER Bipolar

### Installation Notice

#### Dimensions



#### Features

- **mechanical** : Symmetrical DIN rail Mounting - Caged Terminals (section up 0,75x2,5 mm<sup>2</sup>)
- **Weight** : 270 grams
- **Temperatures** : Storage Temperature : -20° à +70°C - Operating Temperature : -10° à +50°C
- **Electrical** : No battery - upstream/downstream insulation = 7,5Kvolts - Power supply = 180/240VAC - 50/60Hz
- **Inputs/Outputs (Option)** : 2 dry alarm contact (60V-50mA) - contact recloser Fault - and contact opening and closing circuit breaker.  
(Option) : Remote control - Tripping
- **Various : (Option)** - default portable counter, connexion on the front face RJ9  
- It's possible to allow several reclosing attempts on a permanent fault.
- **Safety** : - Turned OFF by the switch. It's cut the engine 12Vdc  
- Consignment with padlock (in heading).

Possibility of the ex-factory setting, by specific customer request...

An Rj9 connector can be used to connect a PC via the "IRPC" interface and using software in Windows..

Parameter	STD value	Min/Max	
Number of attempts on transient fault	5	1 à 10	
Reclosing delay on transient fault	8s	2s à 17H	From 1 to 10 different delays according to the authorized number of attempts council max 3
Number of attempts on permanente fault	0	0 à 10	
Reclosing delay on permanente fault	2s	2s à 1h	
Automatic Reset Time Delay	30s	1s à 1h	
Time Delay on Reclosing due to mains Absence	2s	2s à 255s	against the current surge effect
Dry Contact Alarm Time Delay	1s	1s à 17h..	

#### Consignment

- 1 - Turn OFF the engine
- 2 - Tripping, in order to access the hole on the mechanical, in order to your safety padlocks...

